



ASSEMBLY INSTRUCTIONS

Photo Real Scale Building Kit by **INNOVATIVE**
HOBBY SUPPLY

**Scale Z
Outlet
Mall**

- A new alternative to plastic form scale building models!
- Photo Real Scale Building kits may be the most realistic kits available!
- Great for use on model dioramas, slot car, and train track layouts!
- Designed using photos of real building elements for the most realistic appearance



Footprint Dimensions

Model Base
8" x 11"

Outlet Mall 5" x 9"

All scale building kits offer many optional features, for a variety of creative ways to complete each project!

Free replacement parts are available
call: 866-712-4059

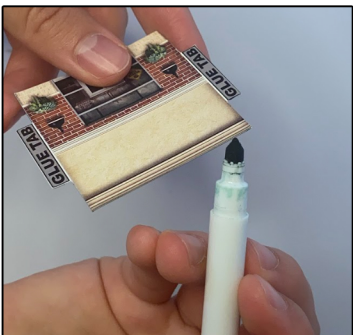


STEP 1 - Collect the correct tools.

For best results, we suggest you gather at least the most basic tools you will need to complete assembly. While you may find more tools that will help you achieve outstanding results, we suggest you start with the following: Hot glue gun, scissors, variety of water based colored markers, tweezers, straight edge rulers, hobby knife, instant setting high strength hobby glue.

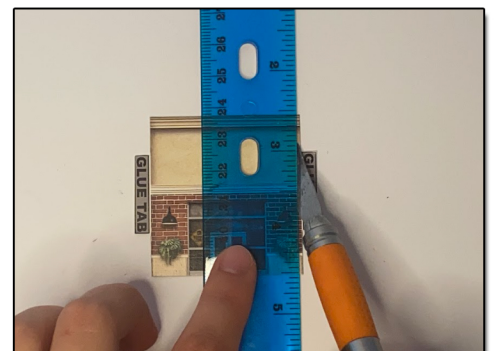


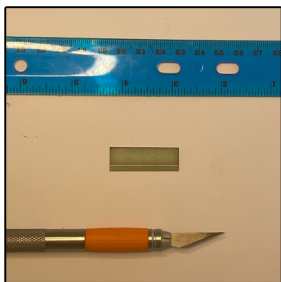
STEP 2 - Empty contents of the kit, and carefully cut out all the individual parts to be assembled. Please note that the most precise cuts you can make will result in a dramatically better looking finished project.



STEP 3 - With appropriate color markers, detail the edges of all the parts you cut out. This will result in a finely finished project once assembled.

STEP 4 - **Scoring.** Using a scoring tool (see picture) and a straight-edge ruler, apply pressure onto the surface of the part you wish to bend, on top of a line you want to fold. This is called scoring. Scoring along lines to be bent makes bending all printed parts easier, and results in a much cleaner looking fold. Bend parts using the length of your straightedge ruler. Scoring is an essential skill.





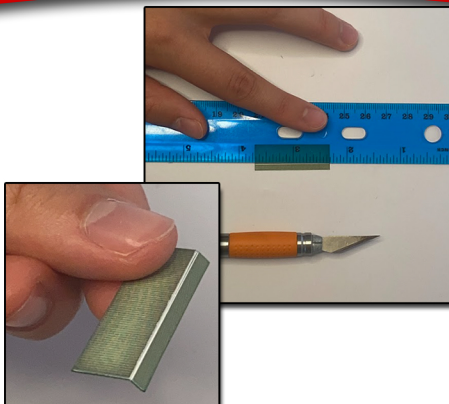
STEP 5 - With scale building kits, there is usually no correct place to begin. In this case, we'll start by scoring and folding the Outlet Mall Awnings. When cutting them out, I recommend putting the 3 Awnings below the Front Wall in a group and the two side awnings. Then put the Outlet Mall 2 Awnings in a group. Just so you know which one is for which.



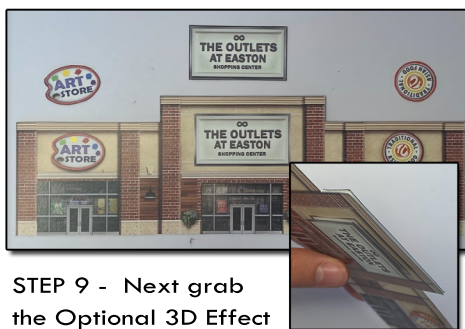
STEP 8 - Place the Back Coverage Wall on to the upper part of the Front Wall. Place evenly. Glue with white glue. Hold until dry.



Step 11 - Place a small amount of hot glue behind the front wall in the middle of the wall, and both sides, left and right. Like shown above. Hold Wall straight 90 degrees from the base until dry.



STEP 6 - Score the Awnings on to the white line. Use a straight edge and a hobby knife. Fold the small tab on the awning downwards, like the photo above. Repeat Step 6 for every Awning, then put aside for later.



STEP 9 - Next grab the Optional 3D Effect Add on Mall signs that match with the 1 Front Wall. Place a dime size glob of Hot glue, Place the correct sign on top of the original gently. Let dry. Once its dry the signs should look 3D.



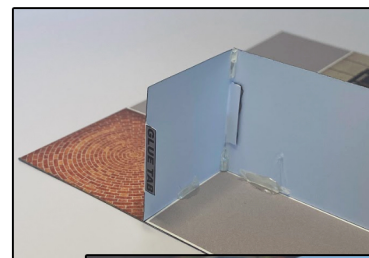
Step 12 - After, grab the side walls labeled with a '1' in-front of it. score and fold the Side Wall glue tabs. Before gluing make sure the correct side wall is going to the correct side place. For an example, the Right side Wall with the door will be facing the patio on the base (orange brick square on the base). Place a small amount of white or hot glue on to the closest glue tab to the front wall. Glue the glue tab on to the front wall. Hold until dry. Repeat for both sides.



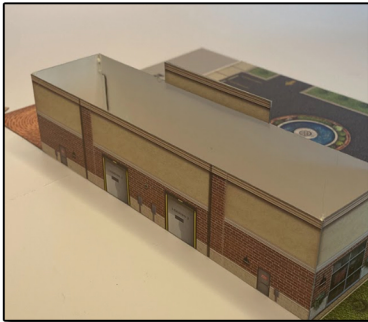
Step 7 - Next let's assemble the "A 1 Outlet Mall Front Wall". Grab the front wall and the Back Coverage For 1 Front Wall. Then flip the Front Wall so the white side is facing up, like the photo above.



STEP 10 - Then line up the 1 Outlet Mall Front Wall to Base 1, facing the parking lot. Make sure the white line of the base isn't showing on the front. Before gluing make sure wall is even on both sides.



Step 13 - After the glue tabs is secured to the front wall, You can place a small amount of hot glue on the base/behind the side wall to secure it even more.



STEP 14 - Now that the side walls are in place, glue the back wall to the rest of the building.



STEP 17- After the Add on signs are assembled, place the 2 Outlet Mall Front Wall on to base 2. Face the wall towards the parking lot. Place 3 sections of hot glue behind the wall, holding it straight up 90 degrees from the base until dry.



STEP 20- Now that both Outlet Mall sides are done, let's glue on the Awnings we scored earlier. Before gluing make sure which awning goes where. The two shorter ones goes on the sides, the longest one for 2 Outlet goes in the middle of 2 front wall. But they are all labeled.



STEP 15 - Once the walls are all together, place the roof on top of the building. You can glue roof on to place with white or hot glue.



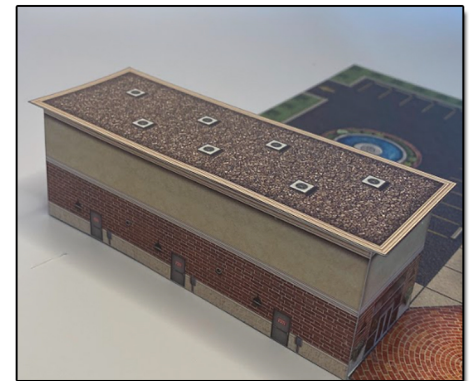
STEP 18 - Then after the Front wall is secure, grab the side walls labeled with a '2'. Connect the correct side walls to the correct side. Use white or hot glue to secure to the front wall, hold until dry. Remember that the side wall with the door faces the patio section on the base.



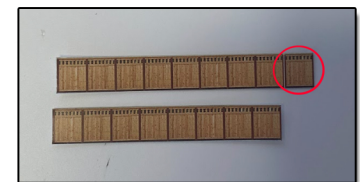
STEP 21 - When gluing the awnings to the building, use a small amount of white glue so its easier to adjust. Place each awning right below the middle trimming on the walls, or in other words right above the windows. Hold until dry.



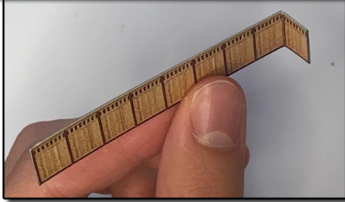
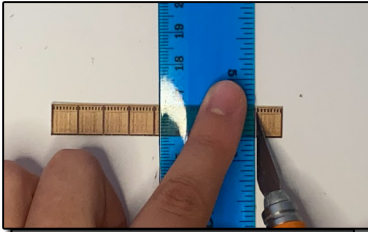
STEP 16 - Next grab the 2 Outlet Mall Front Wall and the rest of the Optional Add on Mall sings. Repeat Step 9 for the Optional 3D Mall signs. Place the correct Add on sign on top of the original with hot glue.



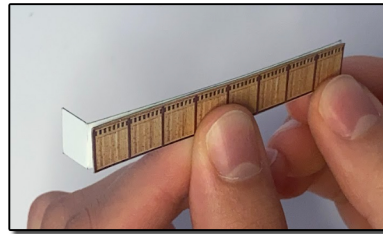
STEP 19 - Next, connect the 2 Outlet Mall Back Wall to the rest of the building. After the back wall is glued on, place the 2 Outlet Mall Roof on.



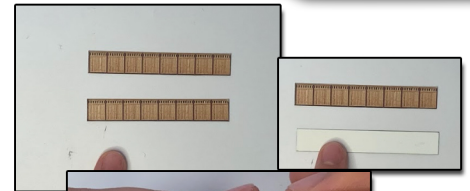
STEP 22 - Now that the awnings are done, let move on to the Fence. Grab Side 1 fence. The one longer, has a white line we need to score and fold. Look at the photo above to locate the white line. Go to page 4 to see the next step.



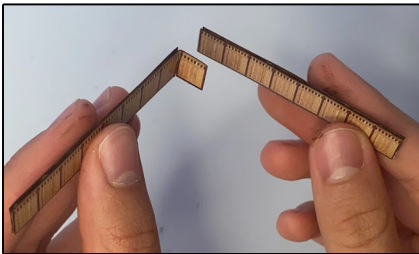
STEP 23 - Score the white line on the fence using a straight edge and a hobby knife. Then Fold inwards 90 degrees like shown above.



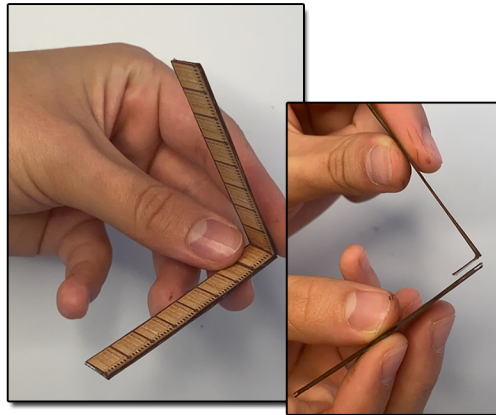
STEP 24 - After the longer Side 1 Fence is scored, grab the other side fence, the shorter one. Glue the shorter one on to the back of the longer one (white side), line up evenly before gluing with white glue. Hold until dry. Like shown above.



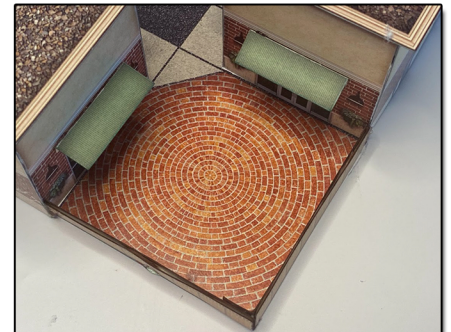
STEP 25 - Next put down the assembled side 1 fence down. Grab the Side 2 fence. Flip on so the white side is facing up. Make sure both sides though is facing the correct way. the dotted details are both up. Place a small amount of white glue between them, hold until dry. Like shown above.



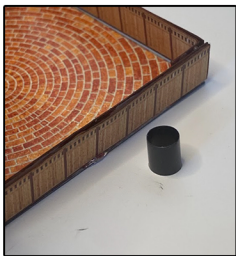
STEP 26 - Now grab both assembled sides of the fence. Before gluing them together, make sure both fence's dotted details are facing upwards. Also make sure the inward folded piece, on Side 1 Fence is facing on your right side. Once that is made sure of, glue the folded piece to Side 2 fence evenly, so it makes a 90 degree angle. Use a small amount of hot glue to connect both of them together.



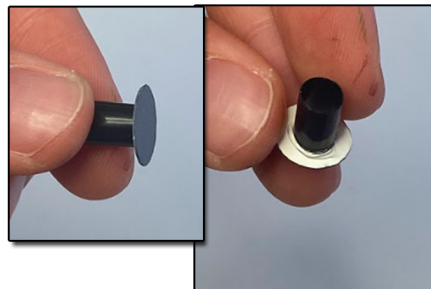
STEP 27- After gluing it should look like the photo above.



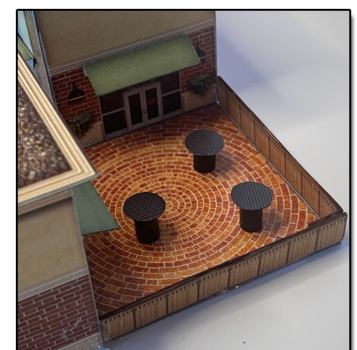
STEP 28 - When gluing the fence on the base, make sure Side 1 Fence is closest to 1 Outlet Mall side wall. Place a small amount of hot glue on to the lower outer side of the side wall, place the end of the fence against it, hold until dry. Then place a tiny amount of hot glue in the middle corner, hold the fence on to the glue until dry. After that, glue the other end of the fence to the outer 2 side wall. And the Fence is now complete.



STEP 29 - Let's assemble the patio tables. Cut a piece of black straw that is slightly shorter than the height of the fence. Cut as many pieces of straw as you need for however much tables you want to make. Once you have those go to Step 30.



STEP 30 - Glue the black straw pieces to each individual Patio table with hot glue. Glue on to the white side, like shown above. After you can glue the bottom of the tables to the patio base shown in the photo on the bottom right.



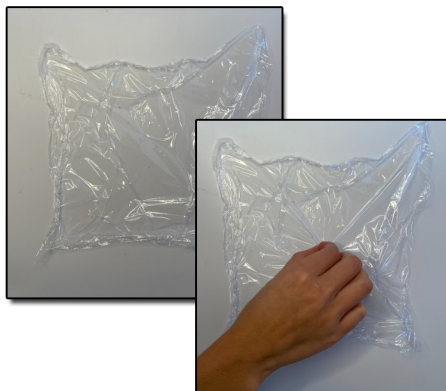


STEP 31- Now grab the Fountain Wrap Around Wall. Glue them to the backs of each other so both side has the brick art on them. Use white glue to stick them together, let dry completely before touching them. After drying, bend them against the end of a table, to make the wall curved.

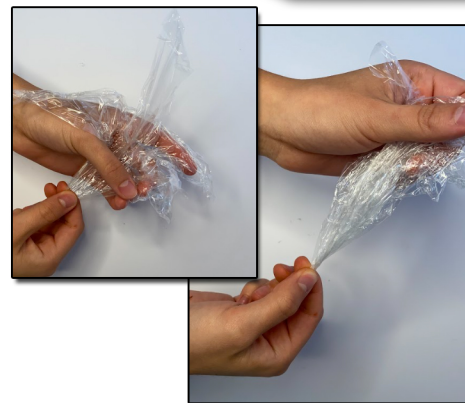
After its curved a bit, glue small sections of the wall at a time with hot glue around the brick fountain found on the base. Once its all around secured, glue the extra fountain wall onto each other, or cut some off before completely gluing together.



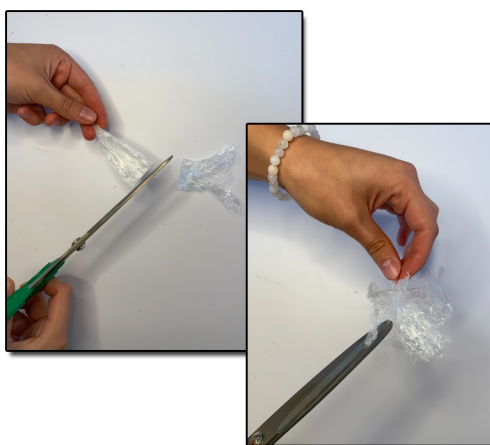
STEP 34 - Then pull on to the plastic wrap so it gives a more water flowing effect.



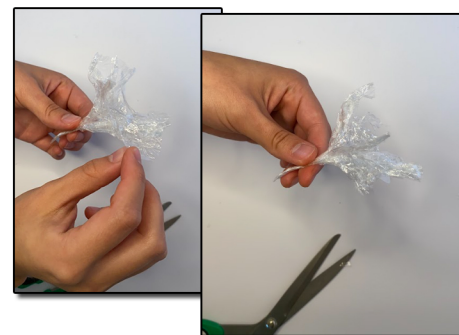
STEP 32 - Now for the fountain water. Grab the plastic wrap included in the kit. grab the middle of it gently.



STEP 33 - then twist the middle gently like shown above while holding the rest above you.



STEP 35 - After cut off the extra plastic wrap above so you have about an 1 1/2 inch left on the bottom.



STEP 36 - Next cut slightly downwards into the fountain water in different areas to give it a more realistic water effect. Pull down gently at the areas cut until desired. You can slowly cut off smaller pieces to get the exact look your going for. After its done, glue the end of the 'water' (twisted part) to the middle of the fountain base with hot glue. Hold until dry. And the building is done!



Go to the next page to see the final results.



ASSEMBLY INSTRUCTIONS

Photo Real Scale Building Kit by **INNOVATIVE**
HOBBY SUPPLY

**Scale Z
Outlet
Mall**



Front of Building



Left Side of Building



Right Side of Building



Rear of Building